

# ILLINOIS INFRASTRUCTURE BRIDGES WITH POTENTIAL IMPACTS TO ILLINOIS AGRICULTURE

*Prepared for:*

**ILLINOIS CORN MARKETING BOARD  
AND  
ILLINOIS SOYBEAN ASSOCIATION**

*Prepared by:*



**May 2011**

This copyrighted material is intended for the use of clients of Informa Economics, Inc., only and may not be reproduced or electronically transmitted to other companies or individuals, whole or in part, without the prior written permission of Informa Economics, Inc. The information contained herein is believed to be reliable and the views expressed within this document reflect judgments at this time and are subject to change without notice. Informa Economics, Inc., does not guarantee that the information contained herein is accurate or complete and it should not be relied upon as such.

**LIST OF EXHIBITS**

Exhibit 1: Grain Elevator Interviews .....	2
Exhibit 2: Thirteen Focus Bridges and Grain Elevators in Illinois .....	3
Exhibit 3: Bridge Number 845 .....	4
Exhibit 4: Bridge Number 846 .....	5
Exhibit 5: Bridge Number 840 .....	6
Exhibit 6: Bridge Number 19638 .....	7
Exhibit 7: Bridge Number 94 .....	8
Exhibit 8: Bridge Number 24763 .....	9
Exhibit 9: Bridge Number 903 .....	10
Exhibit 10: Bridge Number 28118 .....	11
Exhibit 11: Bridge Number 17282 .....	12
Exhibit 12: Bridge Number 17273 .....	13
Exhibit 13: Bridge Number 24775 .....	14
Exhibit 14: Bridge Number 24680 .....	15
Exhibit 15: Bridge Number 19799 .....	16

## Methodology

The “Illinois Infrastructure Assessment and Economic Impact Relative to Grain Movements, Biofuels, Livestock and Further Food Processing” study prepared by Informa Economics identified bridges with sufficiency ratings less than 75 in nine counties across Illinois. The nine counties included Bureau, DeKalb, Adams, McLean, Iroquois, Macoupin, Shelby, Clinton and Wayne. The report highlighted the bridges with sufficiency ratings less than 25 for each of these nine counties. Using information from the National Bridge Index (NBI), the nine counties had 74 bridges with sufficiency ratings less than 25. Of these 74 bridges, 50 were on township roads, 7 on county highways, 6 on state roads (ILL) and unknown, and 5 on federal roads<sup>1</sup>. The bridges on the local roads have an average daily traffic count of 84 while the bridges on the federal roads have over 8,500 vehicles pass over them each day.

The objective for this document was to identify ten bridges that would have the greatest potential impact on grain movement should one of those be closed or posted (e.g., temporary or indefinite weight limit for that bridge). The bridges were identified using a 40 mile radius or draw area of each grain elevator in the nine counties. Bridges with sufficiency ratings less than 25 within those draw areas were selected. From that list, a more specific list was prepared for those bridges within draw areas of multiple elevators and that met a threshold of daily average vehicle traffic counts.

Grain elevators have smaller draw areas than ethanol or soybean crush facilities, 40 miles compared to 100; as a result, a closed or posted bridge has a greater chance of impacting a grain elevator since there are fewer opportunities to find alternative routes. Additionally, there are more grain elevators in Illinois than ethanol or soybean crush facilities.

Interviews with grain merchandisers and elevator managers indicated that a closed or posted bridge near their facility could impact farmers by making them drive an additional 15 to 20 miles impacting the local basis by five cents. If 20% to 25% of business is lost due to a closed bridge, the greatest impact to the elevator would be storage revenue. However, most merchandisers and managers indicated an alternative route may be found that would add an additional 1 to 2 miles and not financially impact the farmer or grain elevator. The list of agriculture facility interviews for the nine focus and surrounding counties is shown in Exhibit 1.

---

<sup>1</sup> Unknown roads have specific street names and are located near or in cities.

**Exhibit 1: Grain Elevator Interviews**

<b>Company</b>	<b>County</b>	<b>Phone Number</b>	<b>Contact</b>
ADM	LaSalle	815-539-7491	Grain Merchandiser (Note: Explained operations at all ADM facilities in northern Illinois)
AgRail	McLean	800-511-3555	Manager
Assumption Co-op Grain	Shelby	217-738-2321	Grain Merchandiser
Cargill	Iroquois	815-265-7251	Grain Merchandiser (Note: Explained operations at all Cargill facilities in Illinois)
CGB	Wayne	618-895-2181	Manager
CGB	Gallatin	812-833-3268	Manager
Donovan Coop	Iroquois	815-496-7325	Manager
Farmers Elevator - CHS	Sangamon	800-546-9023	Grain Merchandiser
INCOBRASA	Iroquois	815-265-4803	Information was given from Brazilian Office
Johnson Grain (Scoular)	Macoupin	217-435-2361	Grain Merchandiser
Tate & Lyle	McLean	309-473-2721	Grain Merchandiser

The bridges presented in this report were identified by using a 40 mile radius of each grain elevator in the nine counties. Thirteen bridges were identified since three are located on interstates, while the remaining ten on state, county or local roads. The first three bridges shown had the highest daily vehicle traffic counts of the 74 bridges analyzed. These bridges are located on Interstate 80 in Bureau County. These three bridges share 22 grain elevators within 40 miles of each elevator. The descriptive statistics for these bridges are shown in Exhibit 3 through Exhibit 5.

The next ten bridges identified in this document are shown in Exhibit 6 through Exhibit 15. The mean daily traffic over the 74 bridges was 1,073 vehicles. The ten bridges selected had daily vehicle traffic over 325 and less than 3,050, representing the bridges near the mean daily traffic counts. Bridges that were located near a city center were eliminated from the top 10 since there are potentially a greater number of alternative routes in the case of a bridge being closed or posted.

The summary exhibits below include descriptive statistics of the bridges and a list of agricultural facilities in proximity of the bridge. Appropriate aerial images are shown for

each bridge. The bridges are in no particular order. The counties represented by these bridges include Adams, Bureau, McLean, Macoupin, Shelby and Wayne.

**Exhibit 2: Thirteen Focus Bridges and Grain Elevators in Illinois**

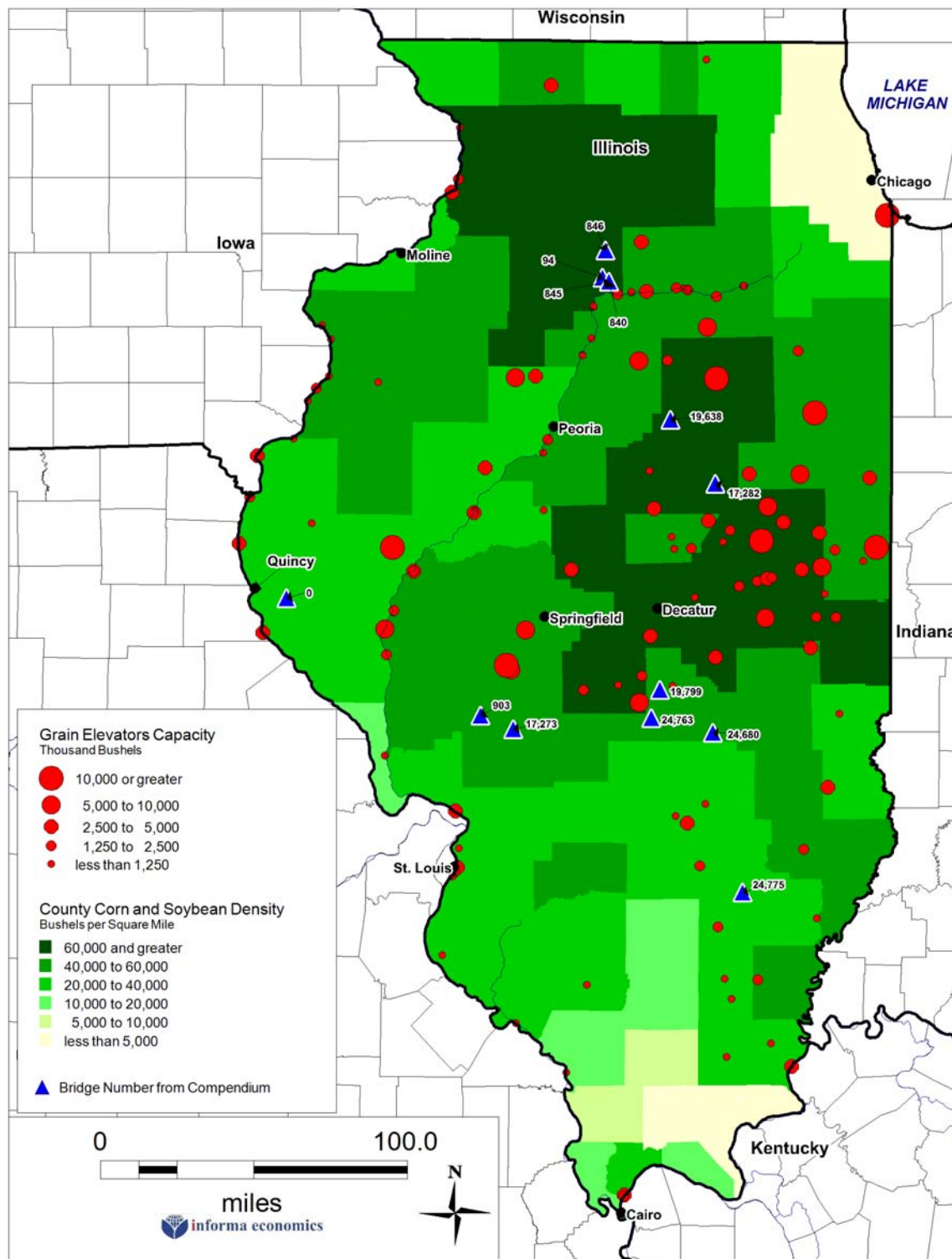


Exhibit 3: Bridge Number 845

National Bridge Structure Number	Bridge # from Informa Compendium	Sufficiency Rating	County	Grain Elevators within 40 Miles of Bridge	Daily Traffic Counts	Type of Road	Year Built
6003001326	845	8	Bureau	22	11,100	Interstate (80 EB)	1963

Agricultural Facilities within 40 Miles	City	Number of Facilities
ADM	Hennepin	1
ADM	Henry	1
ADM	Lacon	1
ADM	Mendota	1
ADM	Ottawa	3
ADM	Spring Valley	1
Cargill	Hennepin	1
Cargill	Lacon	1
Cargill	Ottawa	1
Cargill	Seneca	1
Cargill	Spring Valley	2
CGB	Peru	1
CGB	Princeton	1
CGB	Utica	1
GrainCo FS, Inc.	Ransom	1
Northern Crossing/ADM	La Salle	1
Ruff Brothers Grain Co.	Long Point	1
Ruff Brothers Grain Co.	Toluca	1
Rumbold & Kuhn	Princeville	1
Total		22



Source: Google Earth

Exhibit 4: Bridge Number 846

National Bridge Structure Number	Bridge # from Informa Compendium	Sufficiency Rating	County	Grain Elevators within 40 Miles of Bridge	Daily Traffic Counts	Type of Road	Year Built
6003101327	846	21	Bureau	22	11,100	Interstate (80 WB)	1963

Agricultural Facilities within 40 Miles	City	Number of Facilities
ADM	Hennepin	1
ADM	Henry	1
ADM	Lacon	1
ADM	Mendota	1
ADM	Ottawa	3
ADM	Spring Valley	1
Cargill	Hennepin	1
Cargill	Lacon	1
Cargill	Ottawa	1
Cargill	Seneca	1
Cargill	Spring Valley	2
CGB	Peru	1
CGB	Princeton	1
CGB	Utica	1
GrainCo FS, Inc.	Ransom	1
Northern Crossing/ADM	La Salle	1
Ruff Brothers Grain Co.	Long Point	1
Ruff Brothers Grain Co.	Toluca	1
Rumbold & Kuhn	Princeville	1
Total		22

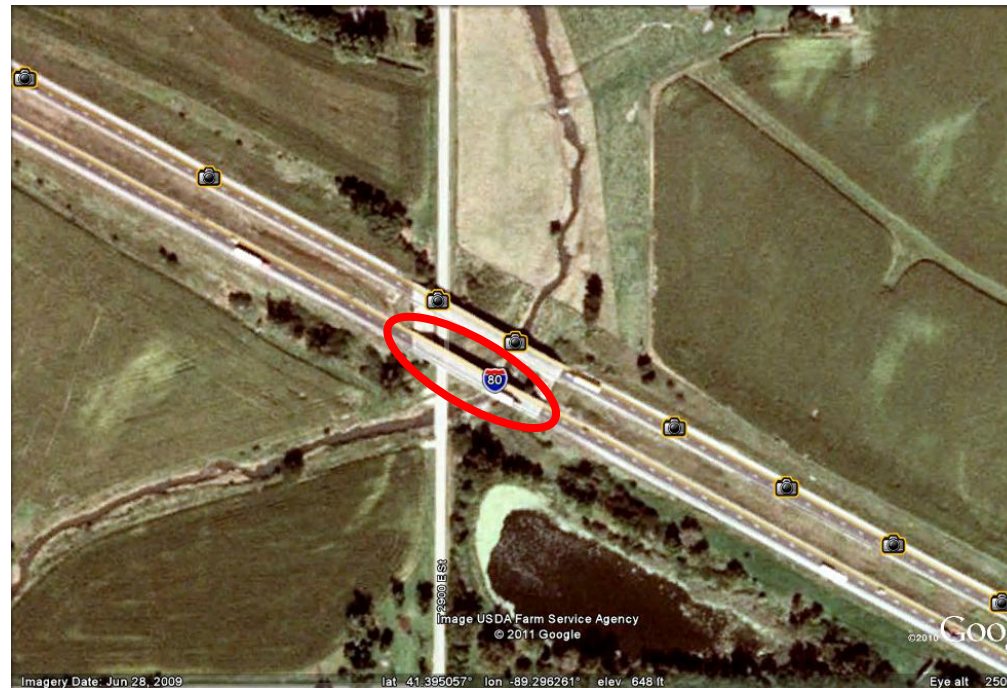


Source: Google Earth

Exhibit 5: Bridge Number 840

National Bridge Structure Number	Bridge # from Informa Compendium	Sufficiency Rating	County	Grain Elevators within 40 Miles of Bridge	Daily Traffic Counts	Type of Road	Year Built
6002601322	840	22	Bureau	22	11,100	Interstate (80 EB)	1963

Agricultural Facilities within 40 Miles	City	Number of Facilities
ADM	Hennepin	1
ADM	Henry	1
ADM	Lacon	1
ADM	Mendota	1
ADM	Ottawa	3
ADM	Spring Valley	1
Cargill	Hennepin	1
Cargill	Lacon	1
Cargill	Ottawa	1
Cargill	Seneca	1
Cargill	Spring Valley	2
CGB	Peru	1
CGB	Princeton	1
CGB	Utica	1
GrainCo FS, Inc.	Ransom	1
Northern Crossing/ADM	La Salle	1
Ruff Brothers Grain Co.	Long Point	1
Ruff Brothers Grain Co.	Toluca	1
Rumbold & Kuhn	Princeville	1
Total		22

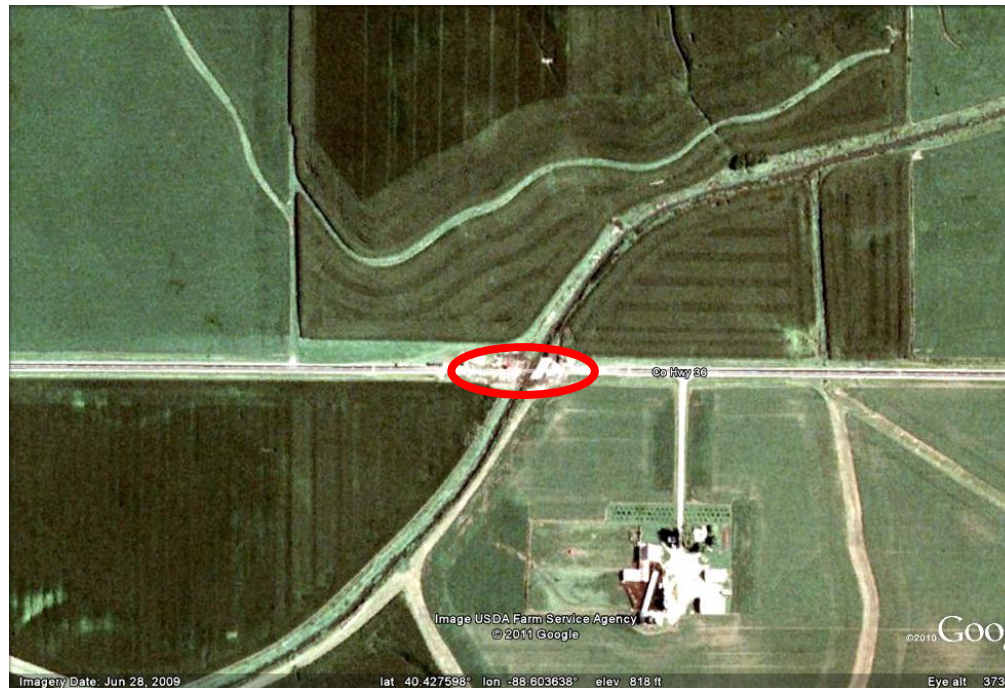


Source: Google Earth

Exhibit 6: Bridge Number 19638

National Bridge Structure Number	Bridge # from Informa Compendium	Sufficiency Rating	County	Grain Elevators within 40 Miles of Bridge	Daily Traffic Counts	Type of Road	Year Built
57320413421	19638	20.4	McLean	22	550	County Highway 36	1941

Agricultural Facilities within 40 Miles	City	Number of Facilities
ADM	Clinton	1
ADM	Farmer City	1
ADM	Lane	1
ADM	Weldon	1
Agrail LLC	Bloomington	1
Cargill	Gibson City	1
Cargill	Gilman	1
Clarkson Grain Co, Inc.	Cerro Gordo	1
JBS United	Royal	1
Ludlow Coop Elevator	Paxton	1
O'Malley Grain, Inc.	Mansfield	1
Prairie Central Co-op	Pontiac	1
Premier Cooperative	Dewey	1
Premier Cooperative	Ivesdale	1
Premier Cooperative	Mansfield	1
Premier Cooperative	Sadorus	1
Premier Cooperative	Sidney	1
Premier Cooperative	Thomasboro	1
Premier Cooperative	Tolono	2
Tate and Lyle	Heyworth	1
The Andersons, Inc.	Champaign	1
Total		22



Source: Google Earth

Exhibit 7: Bridge Number 94

National Bridge Structure Number	Bridge # from Informa Compendium	Sufficiency Rating	County	Grain Elevators within 40 Miles of Bridge	Daily Traffic Counts	Type of Road	Year Built
1301500646	94	22.9	Adams	9	400	County Highway 5	1964

Agricultural Facilities within 40 Miles	City	Number of Facilities
ADM	Naples	1
Bunge	East Hannibal	1
Cargill	Meredosia	1
Cargill	Pittsfield	1
CGB	Naples	1
Ursa Farmers Coop	Bowen	1
Ursa Farmers Coop	Meyer	1
Ursa Farmers Coop	Warsaw	1
Western Grain Mkting	Rushville	1
Total		9



Source: Google Earth

Exhibit 8: Bridge Number 24763

National Bridge Structure Number	Bridge # from Informa Compendium	Sufficiency Rating	County	Grain Elevators within 40 Miles of Bridge	Daily Traffic Counts	Type of Road	Year Built
87324519236	24763	17.8	Shelby	9	550	State Highway 32	1909

Agricultural Facilities within 40 Miles	City	Number of Facilities
ADM	Edgewood	1
ADM	Farina	1
ADM	Macon	1
ADM	St Peter	1
ADM	Sullivan	1
Assumption Grain Coop	Assumption	1
Assumption Grain Coop	Owaneco	1
Assumption Grain Coop	Pana	1
Assumption Grain Coop	Westervelt	1
Total		9

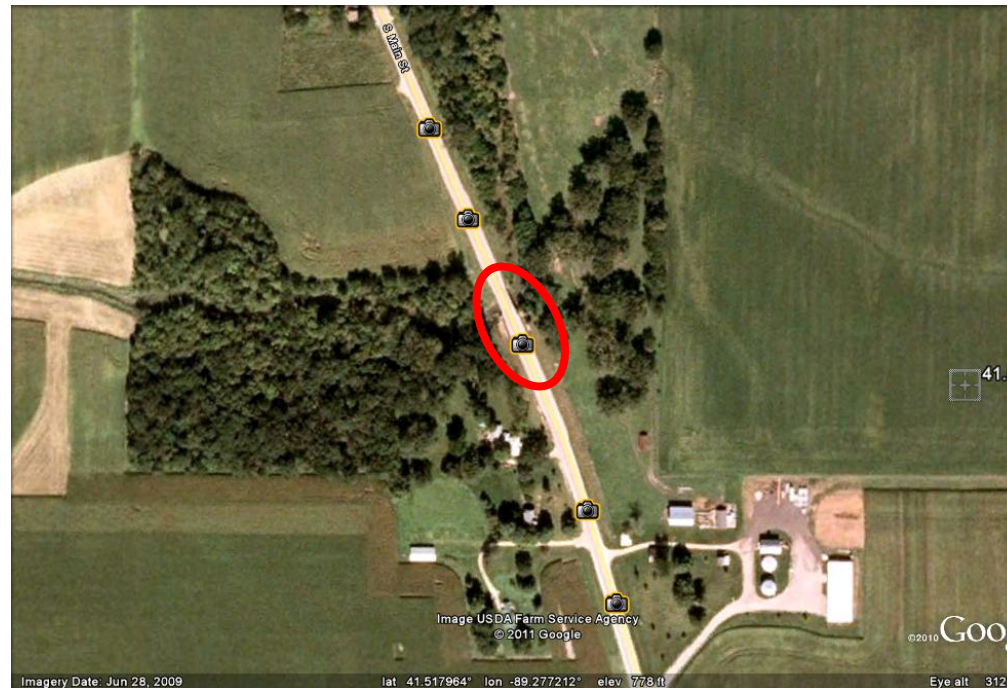


Source: Google Earth

Exhibit 9: Bridge Number 903

National Bridge Structure Number	Bridge # from Informa Compendium	Sufficiency Rating	County	Grain Elevators within 40 Miles of Bridge	Daily Traffic Counts	Type of Road	Year Built
6010401400	903	23.5	Bureau	19	1,450	State Highway 89	1927

Agricultural Facilities within 40 Miles	City	Number of Facilities
ADM	Hennepin	1
ADM	Henry	1
ADM	Lacon	1
ADM	Mendota	1
ADM	Ottawa	3
ADM	Spring Valley	1
Cargill	Hennepin	1
Cargill	Lacon	1
Cargill	Ottawa	1
Cargill	Seneca	1
Cargill	Spring Valley	2
CGB	Peru	1
CGB	Princeton	1
CGB	Utica	1
Northern Crossing/ADM	La Salle	1
Ruff Brothers Grain Co.	Toluca	1
Total		19

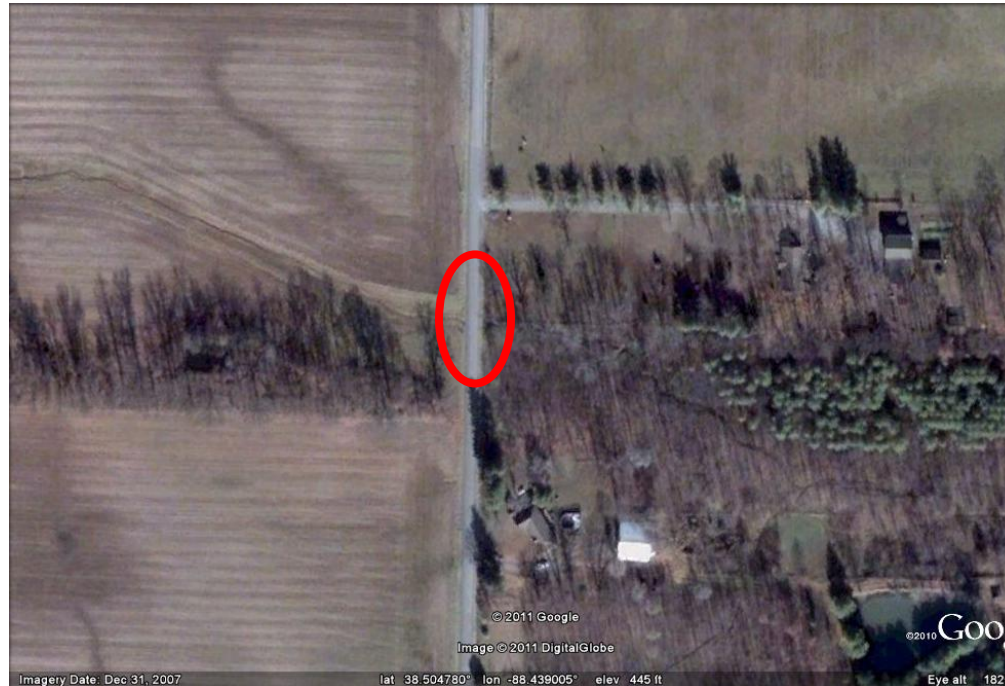


Source: Google Earth

Exhibit 10: Bridge Number 28118

National Bridge Structure Number	Bridge # from Informa Compendium	Sufficiency Rating	County	Grain Elevators within 40 Miles of Bridge	Daily Traffic Counts	Type of Road	Year Built
96600524143	28118	15.8	Wayne	10	600	County Hwy 1400 E	1909

Agricultural Facilities within 40 Miles	City	Number of Facilities
ADM	Edgewood	1
ADM	Farina	1
ADM	St Peter	1
ADM	Xenia	1
Bunge	Dale	1
ConAgra	McLeansboro	1
CGB	Enfield	1
CGB	Olney	1
CGB	Wayne City	1
Peavey Grain	Browns	1
Total		10



Source: Google Earth

Exhibit 11: Bridge Number 17282

National Bridge Structure Number	Bridge # from Informa Compendium	Sufficiency Rating	County	Grain Elevators within 40 Miles of Bridge	Daily Traffic Counts	Type of Road	Year Built
59002313969	17282	16	Macoupin	6	3,050	State Highway 108	1932

Agricultural Facilities within 40 Miles	City	Number of Facilities
ADM Grain Co.	New Berlin	1
Assumption Grain Coop	Owaneco	1
Assumption Grain Coop	Palmer	1
ConAgra Flour Milling	Alton	1
Farmers Elevator (CHS)	Lowder	1
Johnson Grain (Scoular)	Waverly	1
Total		6



Source: Google Earth

Exhibit 12: Bridge Number 17273

National Bridge Structure Number	Bridge # from Informa Compendium	Sufficiency Rating	County	Grain Elevators within 40 Miles of Bridge	Daily Traffic Counts	Type of Road	Year Built
59001113956	17273	20.3	Macoupin	7	1,000	State Highway 111	1930

Agricultural Facilities within 40 Miles	City	Number of Facilities
ADM	New Berlin	1
Assumption Grain Coop	Palmer	1
Cargill	Pittsfield	1
ConAgra Flour Milling	Alton	1
Farmers Elevator (CHS)	Lowder	1
Jersey County Grain	Hardin	1
Johnson Grain (Scoular)	Waverly	1
Total		7



Source: Google Earth

Exhibit 13: Bridge Number 24775

National Bridge Structure Number	Bridge # from Informa Compendium	Sufficiency Rating	County	Grain Elevators within 40 Miles of Bridge	Daily Traffic Counts	Type of Road	Year Built
87330223204	24775	19	Shelby	10	400	County Hwy 12	1975

Agricultural Facilities within 40 Miles	City	Number of Facilities
ADM	Edgewood	1
ADM	Farina	1
ADM	Macon	1
ADM	St Peter	1
ADM	Sullivan	1
Assumption Grain Coop	Assumption	1
Assumption Grain Coop	Owaneco	1
Assumption Grain Coop	Palmer	1
Assumption Grain Coop	Pana	1
Assumption Grain Coop	Westervelt	1
Total		10

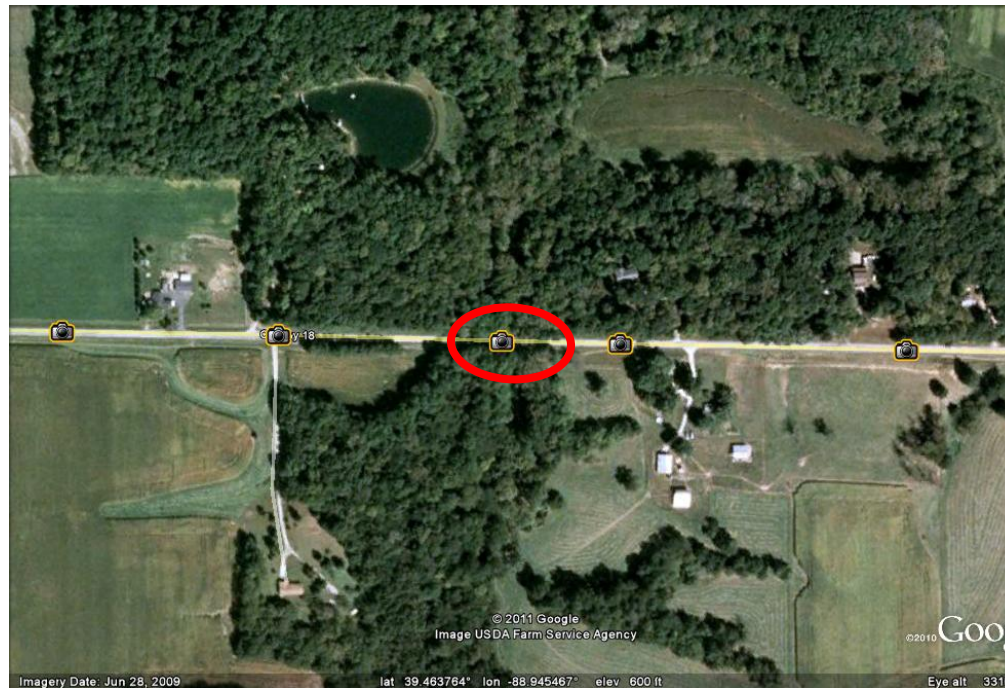


Source: Google Earth

Exhibit 14: Bridge Number 24680

National Bridge Structure Number	Bridge # from Informa Compendium	Sufficiency Rating	County	Grain Elevators within 40 Miles of Bridge	Daily Traffic Counts	Type of Road	Year Built
87300618964	24680	24.2	Shelby	9	325	County Highway 18	1961

Agricultural Facilities within 40 Miles	City	Number of Facilities
ADM	Edgewood	1
ADM	Macon	1
ADM	Sullivan	1
Assumption Grain Coop	Assumption	1
Assumption Grain Coop	Owaneco	1
Assumption Grain Coop	Palmer	1
Assumption Grain Coop	Pana	1
Assumption Grain Coop	Westervelt	1
Clarkson Grain Co, Inc.	Cerro Gordo	1
Total		9

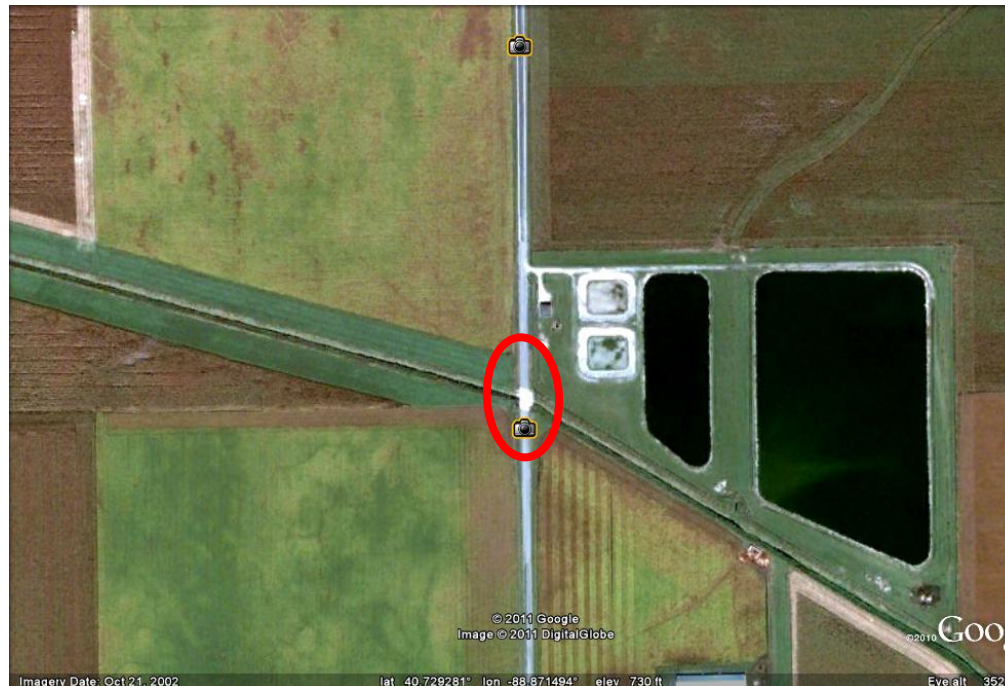


Source: Google Earth

Exhibit 15: Bridge Number 19799

National Bridge Structure Number	Bridge # from Informa Compendium	Sufficiency Rating	County	Grain Elevators within 40 Miles of Bridge	Daily Traffic Counts	Type of Road	Year Built
57460413383	19799	22.4	McLean	13	1,200	County Hwy 29	1957

Agricultural Facilities within 40 Miles	City	Number of Facilities
ADM	Clinton	1
ADM	Creve Coeur	1
ADM	Farmer City	1
ADM	Henry	1
ADM	Lacon	1
Agrail LLC	Bloomington	1
Cargill	Gibson City	1
Cargill	Lacon	1
GrainCo FS, Inc.	Ransom	1
Prairie Central Co-op	Pontiac	1
Ruff Brothers Grain Co.	Long Point	1
Ruff Brothers Grain Co.	Toluca	1
Tate and Lyle	Heyworth	1
Total		13



Source: Google Earth