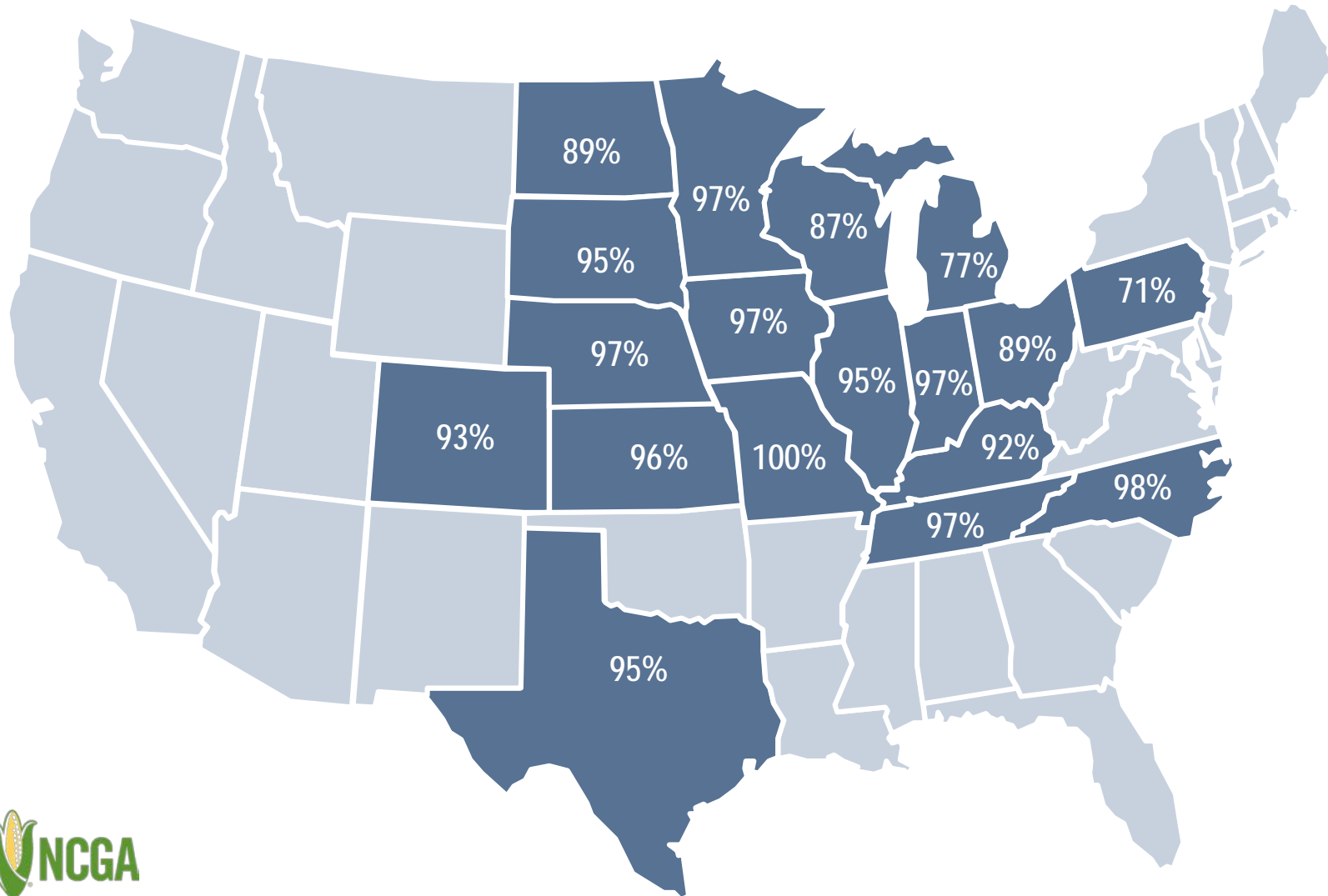




U.S. Corn Update

Corn Supply and Demand | Historical Information

Corn Emerged, June 10



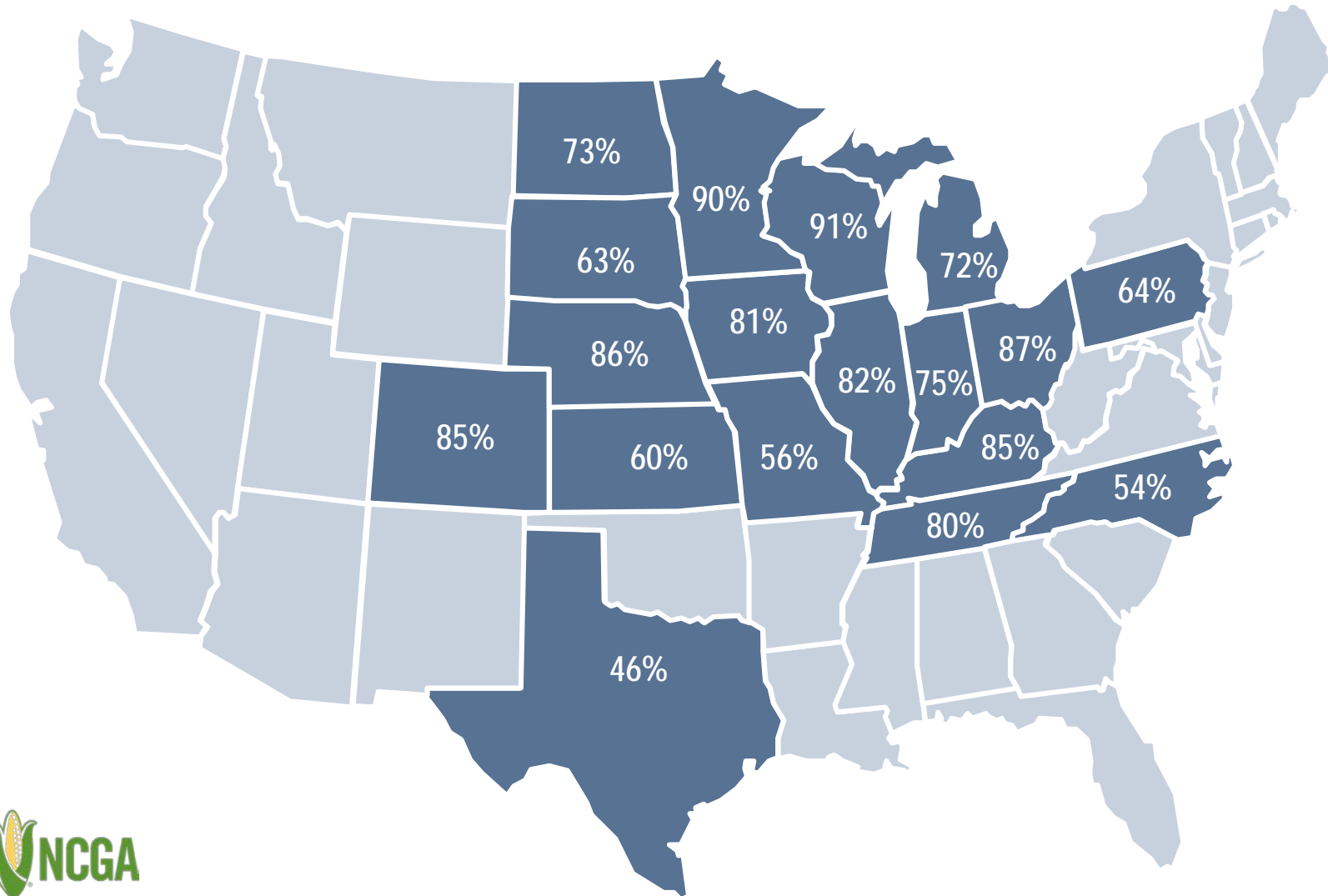
NATIONAL:

June 10, 2018: 94%
June 10, 2017: 93%
Five-Year Avg: 92%

Note: These 18 states highlighted represent 92% of U.S. corn acreage in 2017.



Corn in Good + Excellent Condition, June 10



NATIONAL:

June 10, 2018: 77%
Five-Year Avg: 67%

Note: These 18 states highlighted represent 92% of U.S. corn acreage in 2017.

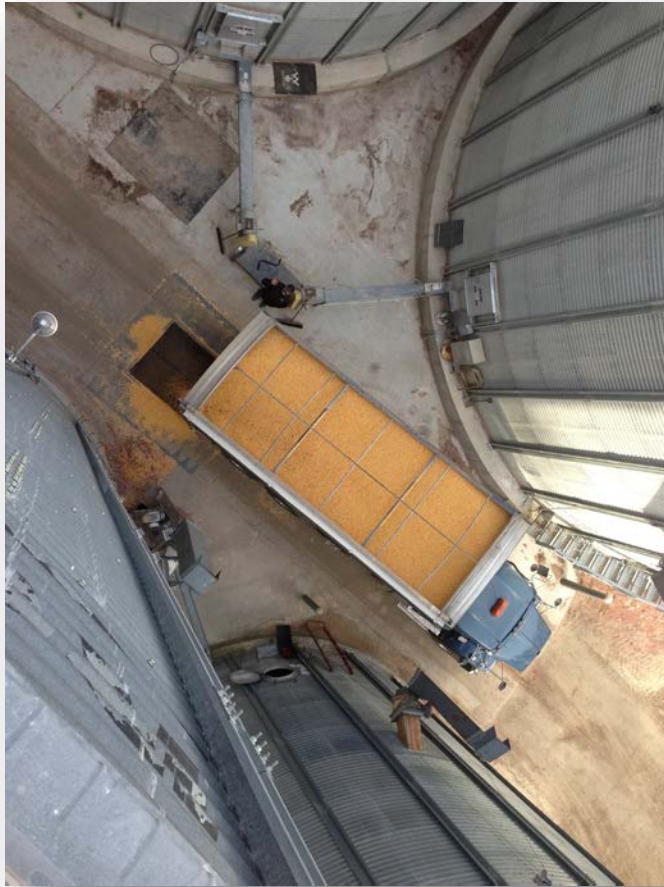


Accuracy of Prospective Plantings Report

Year	March Acres	Final Acreage	Change
2017	89,996	90,886	890 / 1.0%
2016	93,601	94,004	403 / 0.4%
2015	89,199	87,999	-1,200 / 1.3%
2014	91,691	90,597	-1,094 / 1.2%
2013	97,282	95,365	-1,917 / 2.0%
2012	95,864	97,291	1,427 / 1.5%
2011	92,178	91,936	-242 / 0.3%
2010	88,798	88,192	-606 / 0.7%



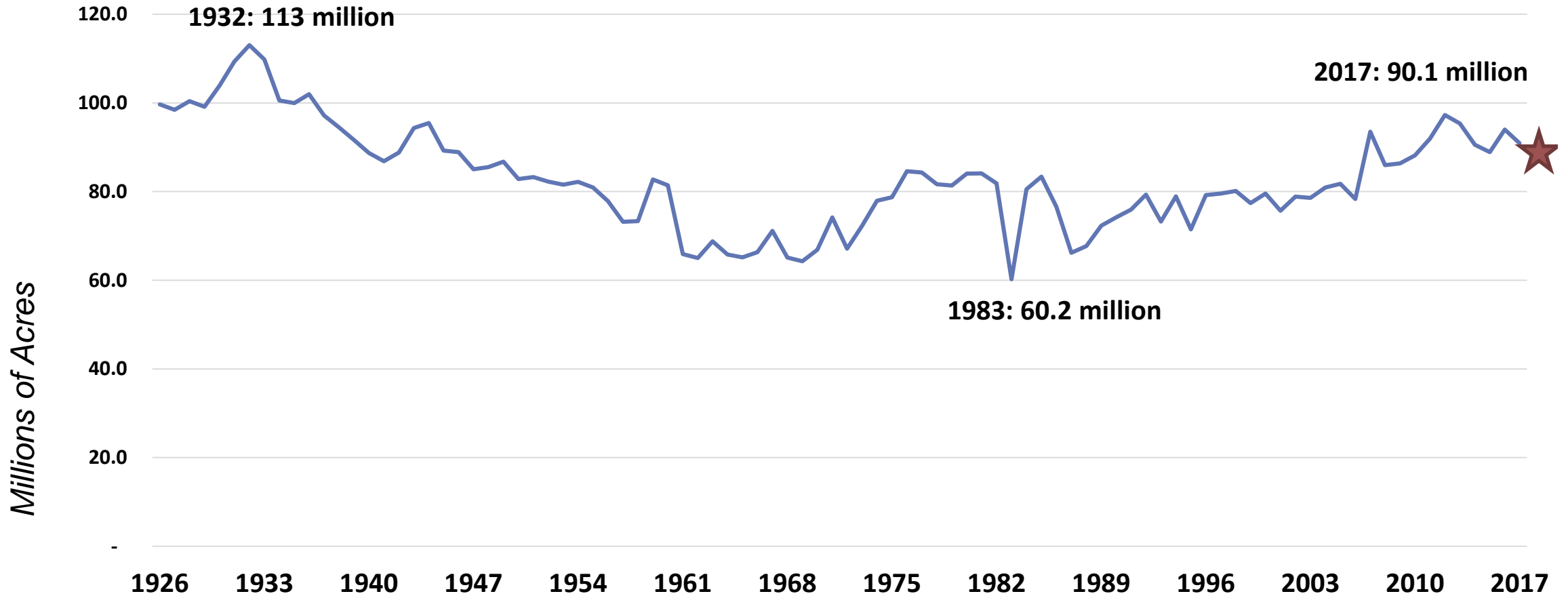
2017 Corn Crop Data



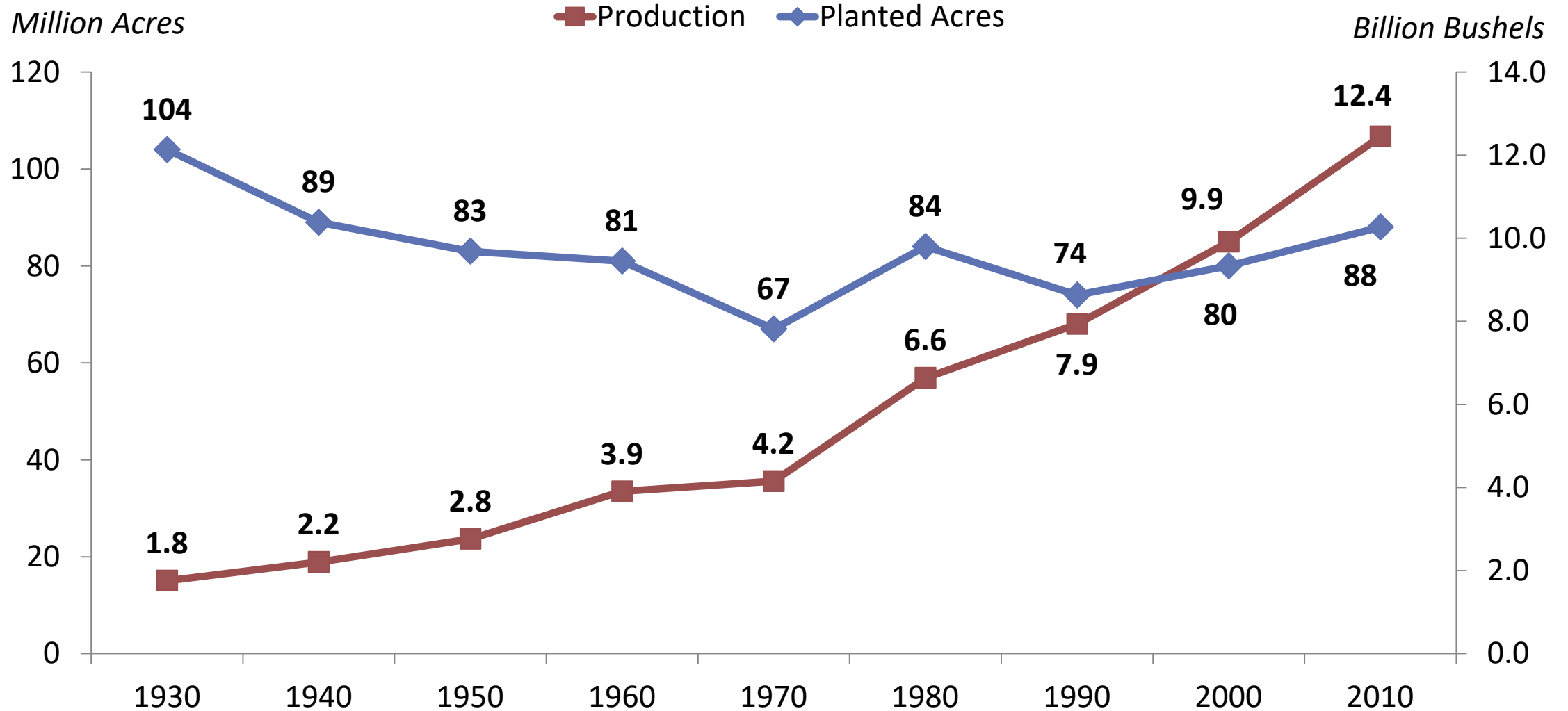
Area Planted	90.1 million acres
Area Harvested	82.7 million acres
Average Yield	176.6 bushels per acre
Corn Production	14.6 billion bushels
Total Corn Demand	14.2 billion bushels
Ending Stocks	2.4 billion bushels
Average Farm Price	\$3.25 per bushel

HISTORICAL INFORMATION

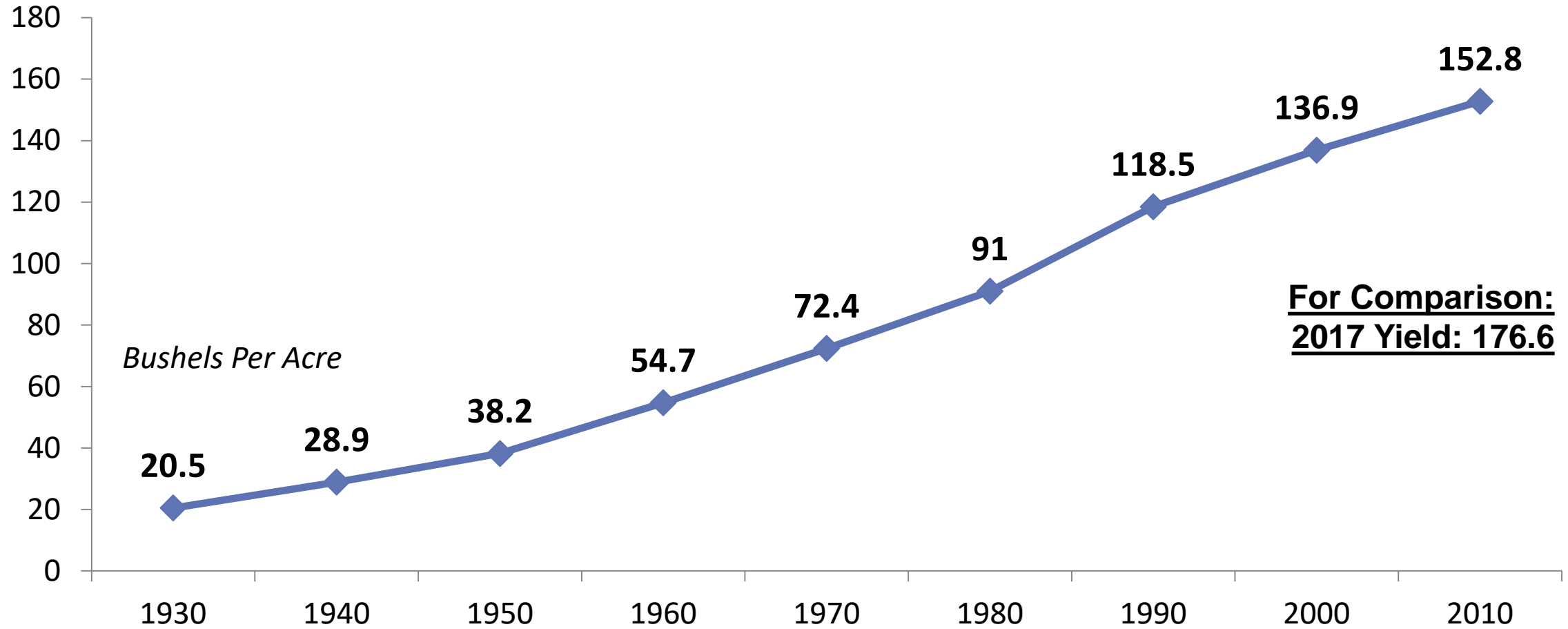
Corn Acres Planted 1926-2017



History: Acres and Production



History: Average Corn Yield



Annual Average Farm Price per Bushel

